



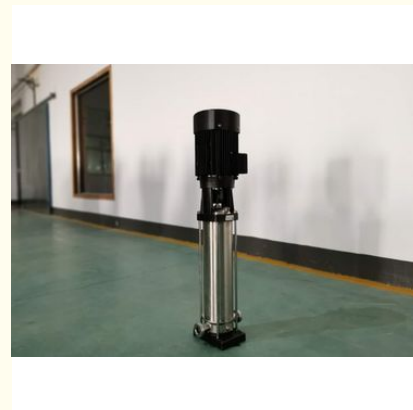
Industrial High Pressure Vertical Centrifugal Pump Water Pressure Boosting

Our Product Introduction

for more products please visit us on horizontal-slurrypump.com

Basic Information

- Place of Origin: China
- Brand Name: horizontal-slurrypump.com
- Model Number: OEM
- Minimum Order Quantity: Negotiation
- Price: Negotiation
- Packaging Details: plywood case
- Delivery Time: 7-30 days
- Payment Terms: T/T, Western Union
- Supply Ability: 3000 pcs per month



Product Specification

- Material: Wetted Parts All In AISI304
- Motor: TEFC, IE2, IP55, Class F
- Frequency: 50Hz Or 60Hz
- Speed: 2950 Rpm Or 3500 Rpm
- Voltage: 220V-440V
- Weight: 52 Kg
- Highlight: light vertical multistage centrifugal pump



More Images



Product Description

CDLF2-260 high head stainless steel vertical multistage pump for water pressure boosting, with high efficiency motor

CDL/CDLF vertical multistage stainless steel centrifugal pump is widely used to handle noncorrosive or lightly-corrosive liquid in various applications, as shown in below,

Applications

water supply.....water filtration and conveying in water works, water boosting in high buildings.
industrial boosting.....water process system, cleaning system, high-pressure flushing system and fire fighting system.
industry liquid conveying.....cooling and air-conditioning system, boiler feed and condensate system, machines.
water treatment.....filtration system, reverse osmosis system, distillation system, separator, and swimming pool.
irrigation.....field irrigation, sprinkling irrigation and drop irrigation.
Integrity pump set. Motor seated on pump, connected by couplings.
When equipped with intelligent protector, dry running, out of phase and overload could be avoided.

Photos and Details





Design and Advantages

Stainless steel impellers. Stamping-welded or precision-casted.

Suction and discharge on the same level.

High efficiency, energy-saving.

Easy installation. Little space required.

Easy maintenance. Sealing could be replaced as one piece.

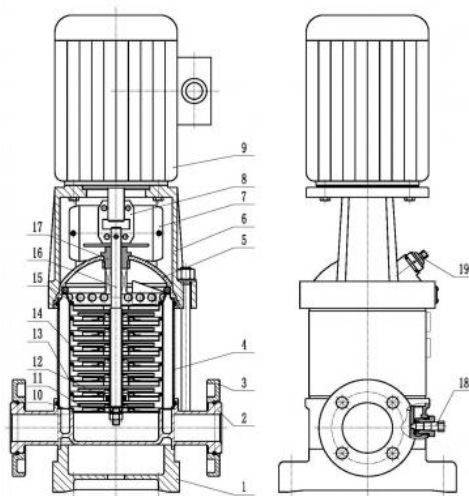
Model Explanation

Range at 50Hz

	Motor power(kW)	Q(m ³ /h)	0.8	1.2	1.6	2.0	2.4	3.0	3.4
CDL2-20	1.5	H(m)	18.5	17	16	15	13.3	11	8.5
CDL2-30	2.2		28	26	24	22	20	16.5	13
CDL2-40	3		37	35	33	30	26.5	22	17.5
CDL2-50	3		45.5	43	40	37	33	27	21.5
CDL2-60	4		54.5	52	49	45	40	33	26
CDL2-70	5.5		64	61	57	52	47	38	30.5
CDL2-90	5.5		82	78	73	67	60.5	49.5	39
CDL2-110	5.5		100	95	89	82	73	59	47
CDL2-130	7.5		119	114	106	98	88	71	55.5
CDL2-150	7.5		137	130	122	112	101	82	64.5
CDL2-180	11		166	157	148	136	122	100	80
CDL2-220	11		200	192	180	165	149	121	98
CDL2-260	11		239	228	214	198	179	145	116

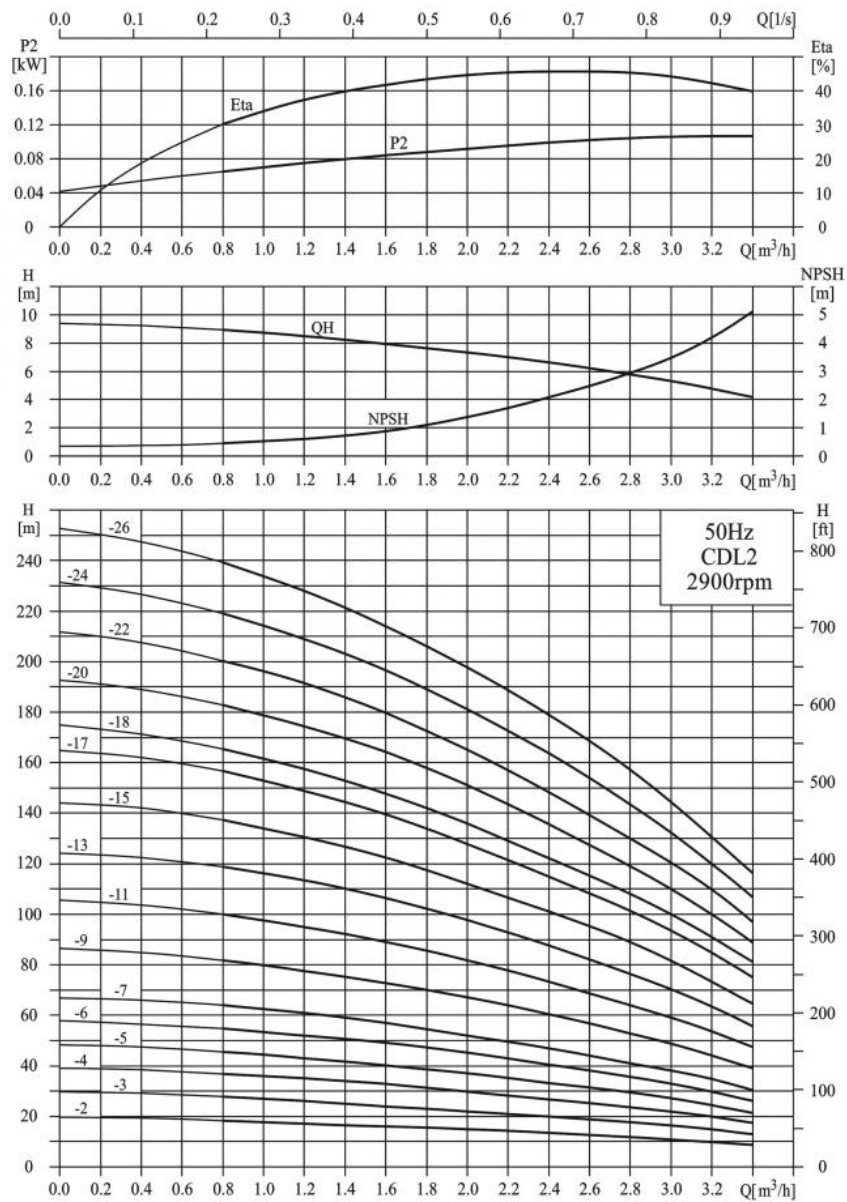
Range at 60Hz

Sectional Drawing

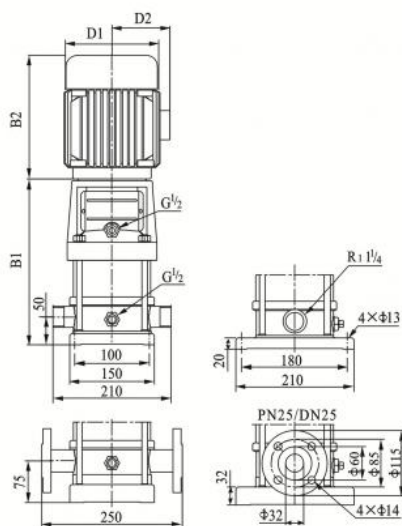


No.	Description	Material	
		CDL	CDLF
1	Baseplate	DIN GG25	
2	Suct. and disch. casing	DIN GG25	ASTM CF8
3	Flange	Carbon steel	
4	Barrel	AISI304	
5	Seal housing	DIN GG25	ASTM CF8
6	Motor stool	DIN GG25	
7	Coupling guard	AISI304	
8	Coupling	Carbon steel	
9	Motor		
10	Suction diffuser	AISI304	
11	Impeller	AISI304	
12	Bush bearing	Tungsten Carbide	
13	Support diffuser	AISI304	
14	Diffuser	AISI304	
15	Discharge diffuser	AISI304	
16	Shaft	AISI304	
17	Seal	Mechanical seal	
18	Drainage plug assy.		
19	Vent plug assy.		

Performance curve



Dimension drawing



	Dimensions (mm)					Weight (kg)
	B1	B2	B1+B2	D1	D2	
CDL2-20	258	210	468	148	117	20
CDL2-30	276	210	468	148	117	20
CDL2-40	294	210	504	148	117	22
CDL2-50	312	210	522	148	117	23
CDL2-60	340	245	585	170	142	26
CDL2-70	358	245	603	170	142	26
CDL2-90	394	245	639	170	142	28
CDL2-110	430	245	675	170	142	29
CDL2-130	476	290	766	190	155	35
CDL2-150	512	290	802	190	155	36
CDL2-180	566	290	856	190	155	41
CDL2-220	638	290	928	190	155	42
CDL2-260	720	315	1035	197	165	52

Floor 5, 2nd Building, Zhonglu Industrial Zone, Shenzhen City, Guangdong Province China (Mainland)

ROMAN Beijing Silk Road
Enterprise
Management Ser
Co., Ltd.

0086-17728102790

jeffreyth