

Stainless Steel Multistage Centrifugal Pump Vertical Pressure Boosting Car Wash

Our Product Introduction

for more products please visit us on horizontal-slurypump.com

Basic Information

- Place of Origin: China
- Brand Name: horizontal-slurypump.com
- Model Number: OEM
- Minimum Order Quantity: Negotiation
- Price: Negotiation
- Packaging Details: plywood case
- Delivery Time: 7-30 days
- Payment Terms: T/T, Western Union
- Supply Ability: 3000 pcs per month



Product Specification

- Material: AISI304 And Cast Iron
- Motor: TEFC, IE2, IP55, Class F
- Frequency: 50Hz Or 60Hz
- Speed: 2950 Rpm Or 3500 Rpm
- Voltage: 220V-440V
- Performance: As Per ISO9906 Annex A
- Liquid Temp.: -15~70°C, Or -15~120°C For Different Materials
- Weight: 27 Kg
- Highlight: light vertical multistage centrifugal pump



Product Description

CDL4-60 stainless steel vertical multistage pump for pressure boosting and car wash

Huayang CDL/CDLF stainless steel vertical multistage centrifugal pump is highly reliable to handle noncorrosive or lightly-corrosive liquid in various applications and satisfy a wide variety of users. Due to its hydraulic advancement, CDL/CDLF pump can provide a capacity up to 170m³/h or a head up to 305m, and saving up to 40% energy in the meantime.

Applications

water supply	Water filtration and conveying in water works, water boosting in high buildings.
industrial boosting	Water process system, cleaning system, high-pressure flushing system and fire fighting system.
industry liquid conveying	Cooling and air-conditioning system, boiler feed and condensate system, machines.
water treatment	Filtration system, reverse osmosis system, distillation system, separator, and swimming pool.
irrigation	Field irrigation, sprinkling irrigation and drop irrigation.

When equipped with intelligent protector, dry running, out of phase and overload could be avoided.

Photos and Details

Our Product Introduction



Design and Advantages

Integrity pump set. Motor seated on pump, connected by couplings.

Stainless steel impellers. Stamping-welded or precision-casted.

Suction and discharge on the same level.

High efficiency, energy-saving.

Easy installation. Little space required.

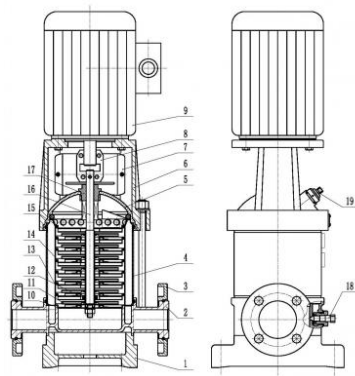
Easy maintenance. Sealing could be replaced as one piece.

Model Explanation

Range at 50Hz

	Motor(kW)	Q(m ³ /h)	1.5	2	3	4	5	6	7
CDL4-20	0.37	H(m)	18.5	18	16.8	15.3	13.5	11.8	8.5
CDL4-30	0.55		28	27.5	26	24	21	18	13.3
CDL4-40	0.75		37.5	36.5	34.5	32	28	24.5	18.5
CDL4-50	1.1		46.5	45.5	43	40	35.5	30.5	23.5
CDL4-60	1.1		55.5	54.5	51.5	48	43	37.5	28.5
CDL4-70	1.5		65	63.5	60	56	50	43	33
CDL4-80	1.5		74	72.5	69	64	58	50	37.5
CDL4-100	2.2		93	91	86	80	72	62	47.5
CDL4-120	2.2		112	109	103	96	86	74	57
CDL4-140	3		132	129	121	112	101	88	68
CDL4-160	3		151	147	139	129	116	101	78
CDL4-190	4		180	176	166	153	139	121	93
CDL4-220	4		210	205	193	178	161	140	108

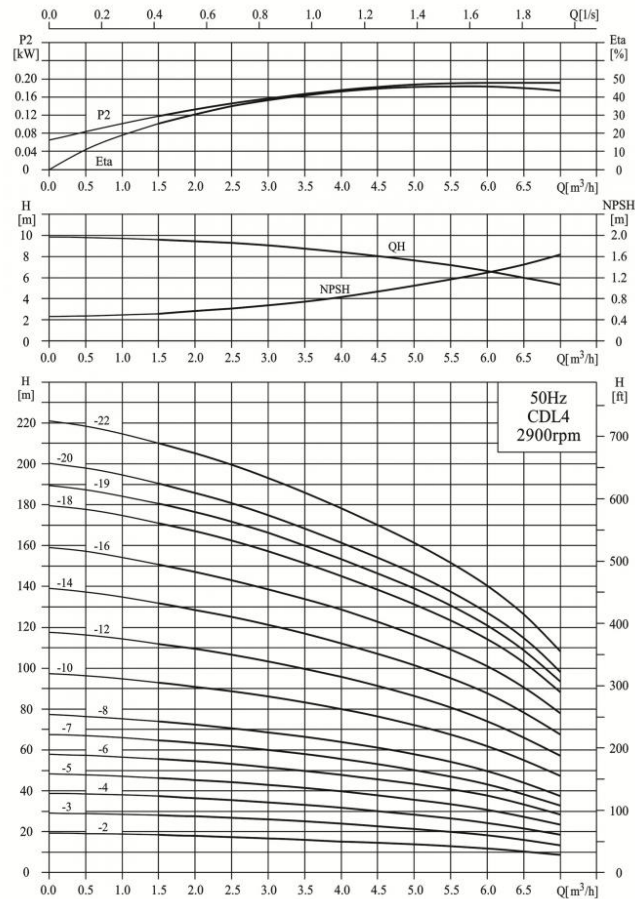
Range at 60Hz



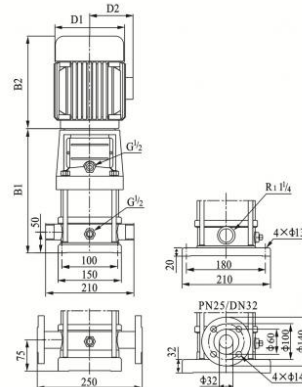
No.	Description	Material	CDL4
1	Baseplate	DIN GG25	
2	Suct. and disch. casing	DIN GG25	ASTM CF8
3	Flange	Carbon steel	
4	Borel	AISI304	
5	Seal housing	DIN GG25	ASTM CF8
6	Motor stool	DIN GG25	
7	Coupling guard	AISI304	
8	Coupling	Carbon steel	
9	Motor		
10	Suction diffuser	AISI304	
11	Impeller	AISI304	
12	Back bearing	Tungsten Carbide	
13	Support diffuser	AISI304	
14	Diffuser	AISI304	
15	Discharge diffuser	AISI304	
16	Shaft	AISI304	
17	Seal	Mechanical seal	
18	Drainage plug assy.		
19	Vent plug assy.		

Sectional Drawing

Performance curve



Dimensions



	Dimensions (mm)					Weight (kg)
	B1	B2	B1+B2	D1	D2	
CDL4-20	276	210	486	148	117	21
CDL4-30	303	210	513	148	117	22
CDL4-40	340	245	585	170	142	25
CDL4-50	367	245	612	170	142	27
CDL4-60	394	245	639	170	142	27
CDL4-70	431	290	721	190	155	33
CDL4-80	458	290	748	190	155	33
CDL4-100	512	290	802	190	155	37
CDL4-120	566	290	856	190	155	38
CDL4-140	630	315	945	197	165	46
CDL4-160	684	315	999	197	165	48
CDL4-190	765	335	1100	230	188	57
CDL4-220	846	335	1181	230	188	59

ROMAN Beijing Silk Road Enterprise Management Services

0086-1700002430

Floor 5, 2nd Building, Zhonglu Industrial Zone, Shenzhen City, Guangdong Province China (Mainland)

jeffreyth@slurrypump.com